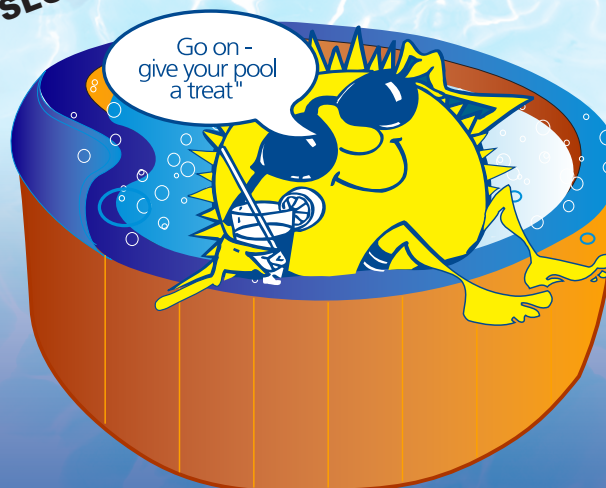




**DANGER**  
KEEP OUT OF REACH OF CHILDREN

# SPA-TABS

SLOW DISSOLVING BROMINE TABLETS



20 gm tablets  
Bromochloro-  
dimethylhydantoin

**USE: Bromine source for disinfection and water treatment**

## DANGER

**DANGER** May intensify fire; oxidiser. Harmful if in contact with skin, inhaled or swallowed. Causes severe skin burns and serious eye damage. May cause an allergic skin reaction. Use only outdoors or in well ventilated area. Do not breathe dust, fumes, or vapours. Do not get in eyes, on skin or on clothing. Wear protective gloves, clothing and eye/face protection and respiratory protection. Wash thoroughly all parts of body after handling. Do not eat, drink or smoke while using this product. Keep away from heat/sparks/open flames/hot surfaces. No smoking. Keep/store away from clothing/combustible materials. Take any precaution to avoid mixing with combustibles. Contaminated work clothing should not leave the workplace. Avoid release into the environment. Store locked up in a well ventilated place. Keep container tightly closed. In case of fire: Use large quantities of water to extinguish. Do NOT use dry chemical powder, CO<sub>2</sub>, or foam. If spillage occurs: Ensure appropriate protective equipment is worn (gloves, overalls, respirator, safety shield, boots). Keep combustibles and incompatible materials (as described in SDS) away from spilled material. With a clean, dry shovel, place material into clearly labelled containers and seal for disposal. Following collection of spilled material, rinse area with copious amounts of water. Keep waste away from drains, sewer and waterways. Consult local waste authorities for appropriate disposal methods.

## DIRECTIONS

- Maintain a total alkalinity of between 80 to 120 ppm (ideal) using Pool-Treat Conditioner.
- Maintain a pH of 7.2 - 7.6 (Ideal)
- Maintain a bromine level of 3.0 to 6.0 ppm bromine (ideal). (Reading on chlorine test kit 1.0 to 3.0 ppm chlorine)
- Dispense bromine tablets in floating or automatic feeders.
- Weekly shock dose with SPA CHLOR 6 to 10 teaspoons (30 to 50 gms) per 1500 litres spa pool.
- Replace spa water 2 monthly or as required.

## FIRST AID

**FIRST AID** – If medical advice is needed, have product container, label or SDS at hand. **IF ON SKIN** (or hair): Wash with plenty of soap and water. Take off contaminated clothing and wash before re-use. Seek immediate medical advice/attention. **IF IN EYES** – Rinse cautiously with water for several minutes; Remove contact lenses, if present and easy to do so. Immediately call a Poison Centre or Doctor/Physician. **IF SWALLOWED** – Rinse mouth. Do NOT induce vomiting. Seek immediate medical attention. **IF INHALED** – Remove to fresh air and keep at rest in a position comfortable for breathing. If you feel unwell seek medical attention. National Poisons Centre – 0800 764 766 **IN EMERGENCY** – Ring 111 then ask for ambulance for medical help or fire for major spills.

HAZARDOUS SUBSTANCE  
Bromo-chloro-dimethylhydantoin

HAZCHEM – 2W  
UN NO – 3085 CAS NO – 16079-88-2  
P/GROUP – III CLASS – 5.1 SUB - 8

HSNO Classifications  
5.1.1B, 6.1B, 6.5B, 8.2C, 8.3A, 9.1A, 9.1B 9.3B



Pack sizes available  
1kg, 2kg, 5kg, 20kg

**HamChem**  
Hamilton Chemicals Ltd  
75 Ruffell Road, Hamilton  
Phone 07-974-4971  
Email: info@hamchem.nz  
Web: www.hamchem.nz